



Southeast Nebraska
COMMUNICATIONS
People • Service • Quality

110 West 17th Street, Falls City, NE 68355
245-4451 • www.sentco.net

Manual Conversion Steps for SMTP Authentication – Mac OSXv2 Mail

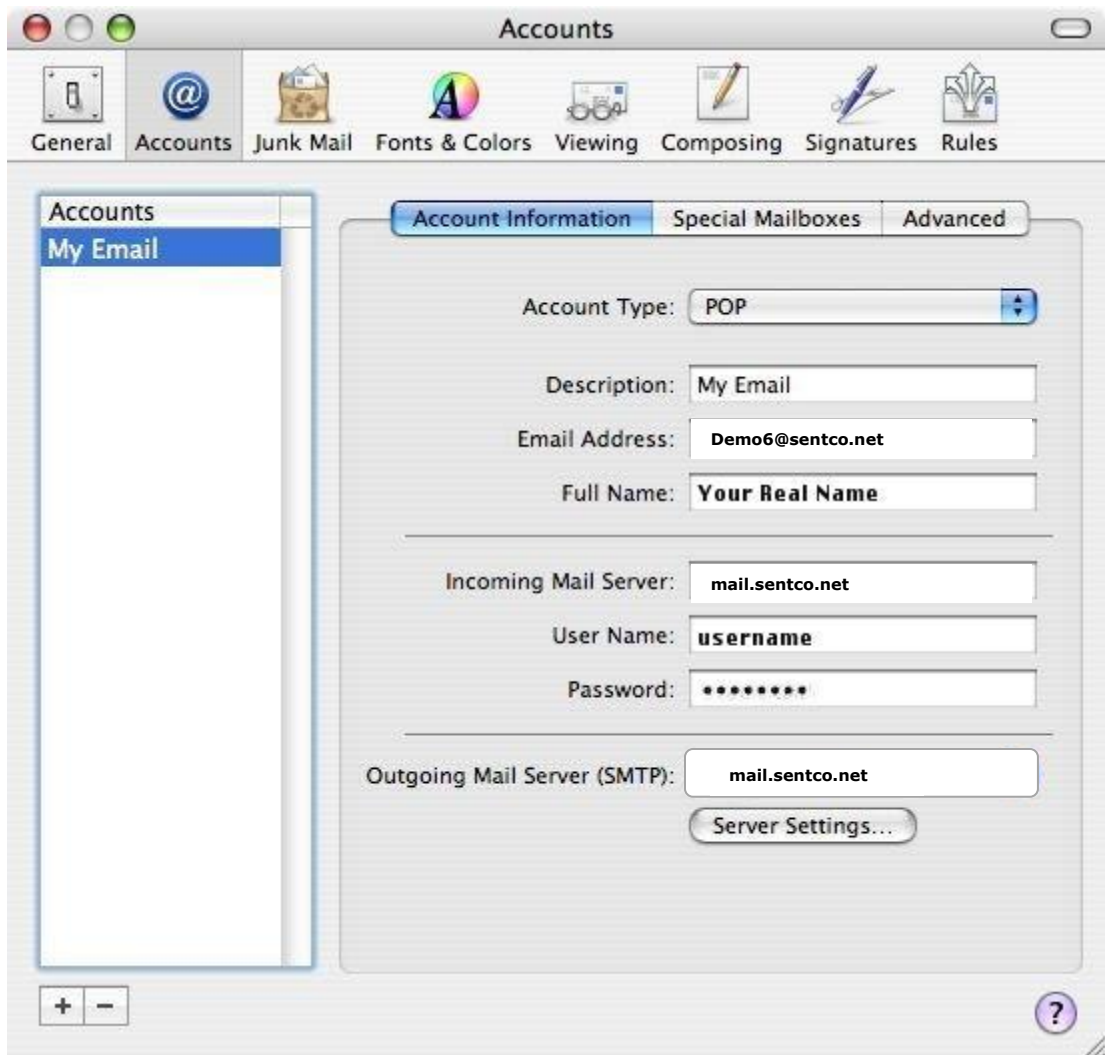
1. Open Mail by clicking on the **Mail** icon on the finder bar, or by opening the **Macintosh HD**, opening the **Applications** folder, and double clicking on the **Mail** icon.



2. Click the **Mail** menu and choose **Preferences**.



3. Click the "Server Settings" button.



- Click the arrows next to **"None"** and select **"Password"** For **Server Port**, enter 587. For **User Name** enter your sentco.net email address. Enter your email account password in the **Password** field.

SMTP Server Options

Outgoing Mail Server:

Check with your system administrator before changing any of the advanced options below:

Server port:

Use Secure Sockets Layer (SSL)

Authentication:

User Name:

Password:



- Click OK

You have now made the required changes.

If you need further assistance with your sentco.net email account, please give us a call at (402) 245-4451.